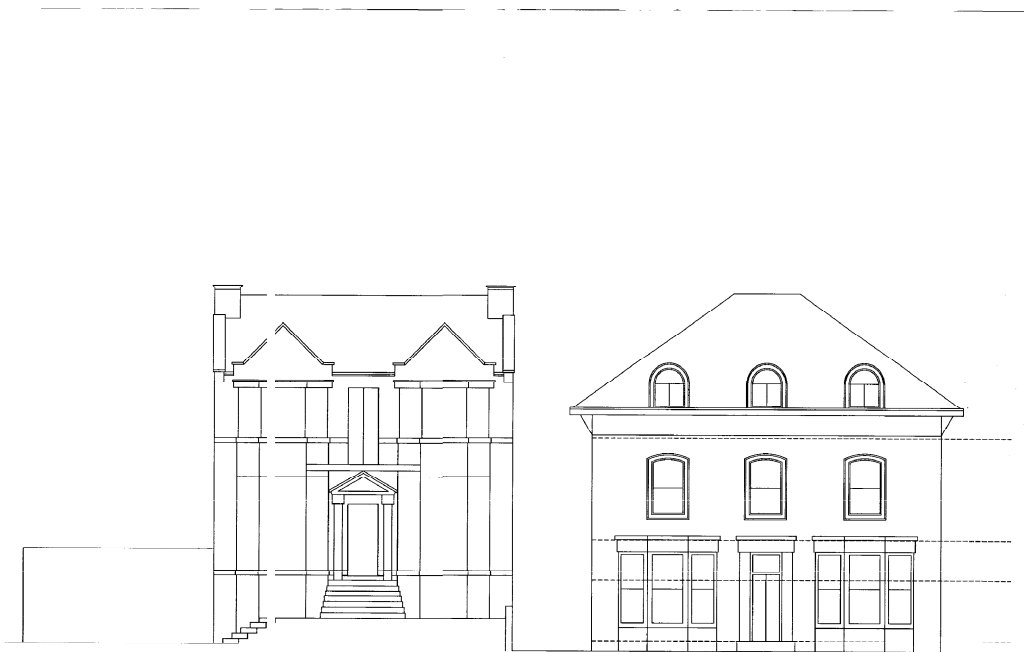


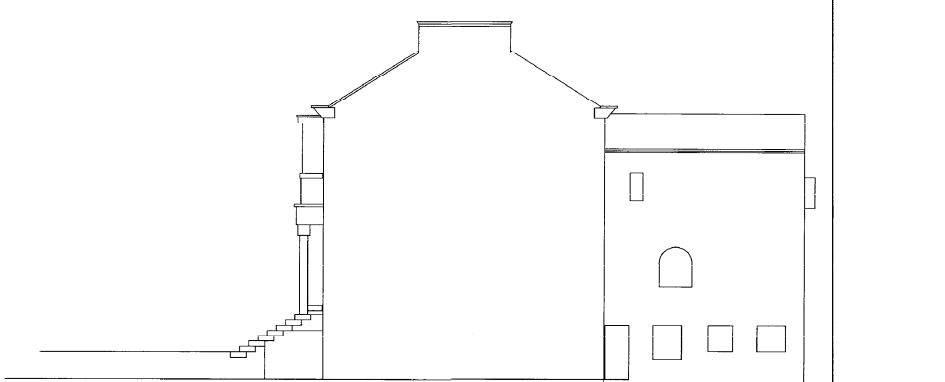
West elevation



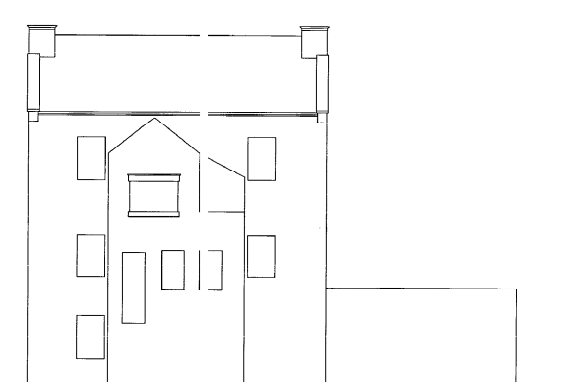
40 Yarm Road

40 Yarm Road

East elevation to Yarm Road



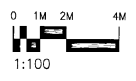
North elevation



South elevation

Existing elevations : 42 Yarm Road

09/1263/-



Revisions				
NO	DATE	BY	REVISION	DATE
1	18/05/2009	AGS	Final issue	

		Jomast Developments 11, 12 & 13, 14, 15, 16, 17, 18, 19, 20, 21, 22, 23, 24, 25, 26, 27, 28, 29, 30, 31, 32, 33, 34, 35, 36, 37, 38, 39, 40, 41, 42, 43, 44, 45, 46, 47, 48, 49, 50, 51, 52, 53, 54, 55, 56, 57, 58, 59, 60, 61, 62, 63, 64, 65, 66, 67, 68, 69, 70, 71, 72, 73, 74, 75, 76, 77, 78, 79, 80, 81, 82, 83, 84, 85, 86, 87, 88, 89, 90, 91, 92, 93, 94, 95, 96, 97, 98, 99, 100 T: 01462 61825 F: 01462 61825 E: enquiries@jomast.co.uk		
PROJECT				
40_42 YARM ROAD				
DRAWING TITLE				
EXISTING ELEVATIONS_2				
NO	DATE	BY	REVISION	DATE
1	18/05/2009	AGS	Final issue	